

**Mediflex**<sup>®</sup>  
SURGICAL PRODUCTS



**DynaTrac™ Retractor Systems**  
FOR OPTIMAL SURGICAL EXPOSURE & STABILIZATION

# DynaTrac™ Retractor Frame & Stays

DYNAMIC, VERSATILE & STABLE RETRACTION

## DYNAMIC

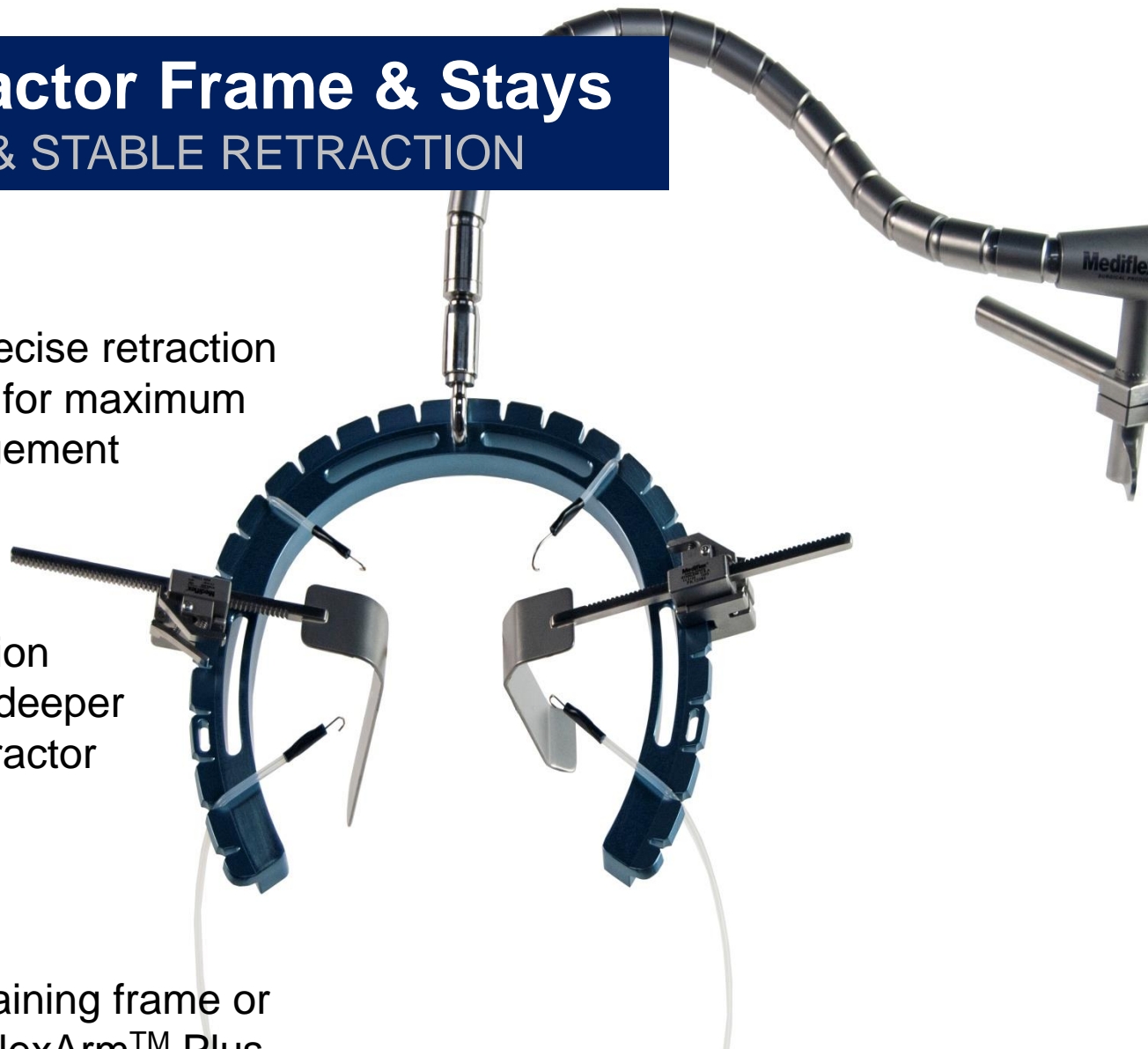
Allows for progressive, precise retraction throughout the procedure for maximum field exposure and management

## VERSATILE

Permits superficial retraction using Surgical Stays and deeper tissue retraction using retractor blades

## STABLE

Can be used as a self-retaining frame or connect via Hex Post to FlexArm™ Plus for stable table mounted retraction.



**Mediflex**®  
SURGICAL PRODUCTS

# DynaTrac™ Retractor Frame & Stays

DYNAMIC, VERSATILE & STABLE RETRACTION

## DynaTrac™ System Versatility



Lightweight DynaTrac™ Retractor Frame with Surgical Stays only



Table Mounted DynaTrac™ Retractor Frame with Mini-Bookler® Retractor Blades & Tilt Ratchets



FlexArm™ Plus Table Mounted DynaTrac™ Retractor Frame with Surgical Stays, Mini-Bookler® Retractor Blades & Tilt Ratchets

# DynaTrac™ Retractor Frame & Stays

DYNAMIC, VERSATILE & STABLE RETRACTION

## DynaTrac™ Surgical Stays

- Sterile, Disposable
- 4 Stays per pack, 5 packs per box

**REF. NO. 4012B**  
12mm Blunt Hook



**REF. NO. 4005S**  
5mm Sharp Hook



**REF. NO. 4005B**  
5mm Blunt Hook

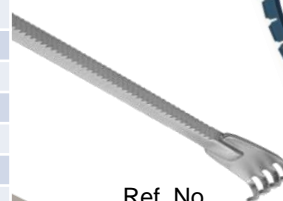


**Mediflex**®  
SURGICAL PRODUCTS

# DynaTrac™ Retractor Frame & Stays

## DYNAMIC, VERSATILE & STABLE RETRACTION

ORDERING INFORMATION		
PRODUCT	REF. NO.	DESCRIPTION
DYNATRAC™ RETRACTOR FRAME	78000-HP	DynaTrac™ Frame, Horseshoe with Hex Post 8.4" ( 21.3cm) x 7.8" (19.8cm)
	4005S	5mm Sharp Hook, Sterile, 4 Stays/Pk, 5 Pks/Bx
DISPOSABLE ELASTIC	4005B	5mm Blunt Hook, Sterile, 4 Stays/Pk, 5 Pks/Bx
SURGICAL STAYS	40012B	12mm Blunt Hook, Sterile, 4 Stays/Pk, 5 Pks/Bx
BLADE RATCHET	72294	Mini-Bookler® Tilt Ratchet
	72256	Double Hook, Blunt, .2 x .4" (.5 x 1cm)
MINI-BOOKLER® HOOK RETRACTORS	72252	Triple Hook, Blunt, .35 x 4" (.9 x 1cm)
	72257	Quad Hook, Blunt, .5 x .35" (1.3 x .9cm)
	72150	Quad Hook, Deep, Blunt, .7 x .55 (1.8 x 1.4cm)
	72150-S	Quad Hook, Deep, Sharp, .7 x .55 (1.8 x 1.4cm)
MINI-BOOKLER® SURGICAL RETRACTOR BLADES	72276	Deaver, ½ x 2" (1.3 x 5.1cm)
	75638	Deaver, 1 x 3 ½" (2.5 x 8.9cm)
	75639	Deaver, 1 x 5" (2.5 x 12.7cm)
	72263	Kelly, ½ x 2" (1.3 x 5.1cm)
	72269	Kelly, 1 x 1 ½" (2.5cm x 3.8cm)
	72271	Kelly, 1 ½ x 2" (3.8 x 5.1cm)
	72259	Malleable, ½ x 2 ½" (1.3 x 6.4cm)
	72273	Malleable, ½ x 4" (1.3 x 10.2cm)
	72272	Malleable, ¾ x 4" (1.9 x 10.2cm)
	72274	Malleable, 1 x 4" (2.5 x 10.2cm)
	75642	Malleable, 1 x 5" (2.5 x 12.7cm)
	75633	Rectal, ⅞ x 2 ⅞" (2.2 x 7.3cm)
	75634	Rectal, ⅞ x 3 ⅞" (2.2 x 9.8cm)
	75635	Renal, Wiley, 1 x 7" (2.5x 17.8cm)
	75636	Vaginal, Lateral, 1 x 3" (2.5 x 7.6cm)
75637	Vaginal, Posterior, 1 x 4 ½" (2.5 x 11.5cm)	
FLEXARM™ PLUS SYSTEM	99054-QCLR	FlexArm™ Long Reach System, QC Hex Fitting
HOLDING ATTACHMENTS	72162	10mm Quick-Grip Automatic Holding Tip
	72163	5mm Quick-Grip Automatic Holding Tip



**Mediflex®**  
SURGICAL PRODUCTS

# DynaTrac™ Retractor Frame & Stays

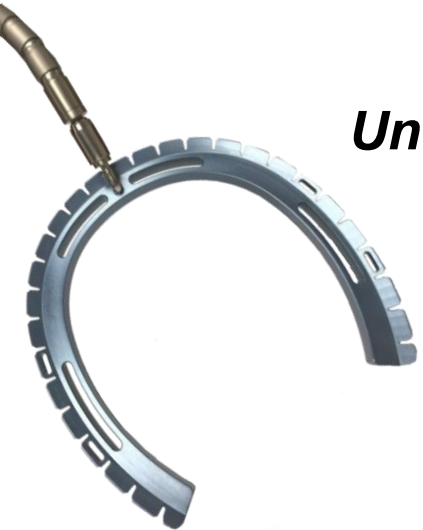
DYNAMIC, VERSATILE & STABLE RETRACTION

Featuring proprietary Mediflex  
Hex Post fitting to connect to  
FlexArm™ Plus

## Key Applications

***Unobstructed visualization and access  
for transvaginal procedures  
including:***

- Vaginal Hysterectomy
- Reconstructive pelvic surgery
  - Sling Procedures
  - Anterior Repair Procedures
  - Posterior Repair Procedures
- Vaginal Biopsies
- Mesh Excision
- Episiotomy Repair

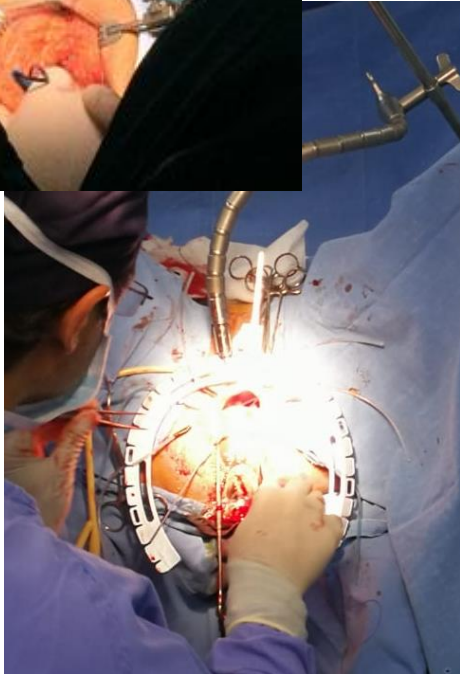
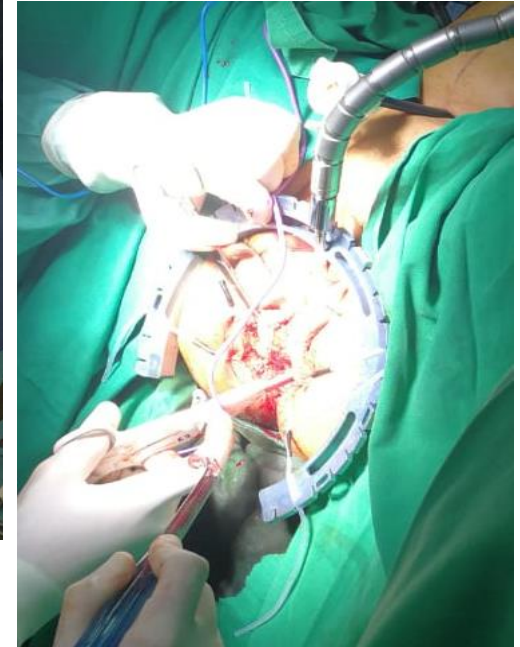
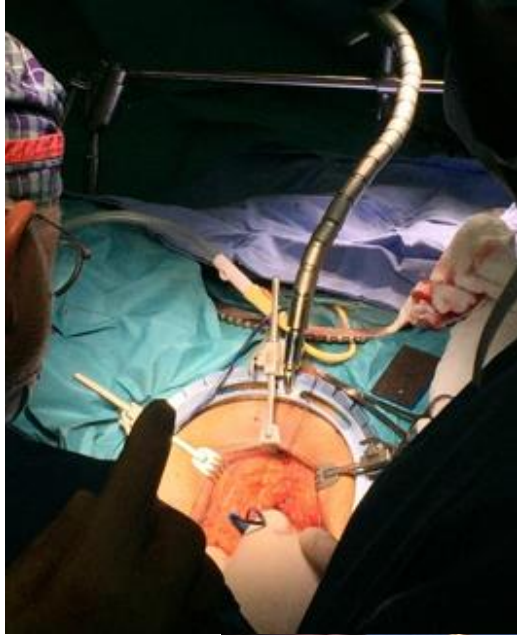


**Mediflex®**  
SURGICAL PRODUCTS



# DynaTrac™ Retractor Frame & Stays

DYNAMIC, VERSATILE & STABLE RETRACTION



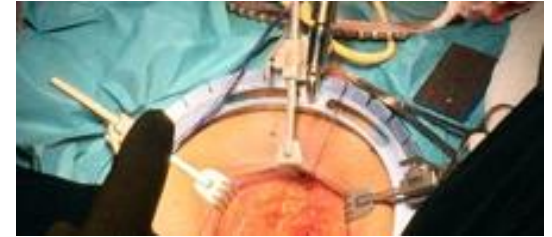
**Mediflex**®  
SURGICAL PRODUCTS

# DynaTrac™ Retractor Frame & Stays

DYNAMIC, VERSATILE & STABLE RETRACTION

## Features & Benefits

- Simplifies the dissection and overall surgery
- Adaptability to retraction requirements-superficial and/or deep(er)
- Constant retractive force using elastic Stays and/or blades
- Unobstructed visualization; uniform exposure
- Eliminates an assistant used for retraction
- Saves procedure time – OR time
- Reusable Frame and Blades are cost-effective
- FlexArm™ Plus Holding & Positioning System provides maximum stabilization



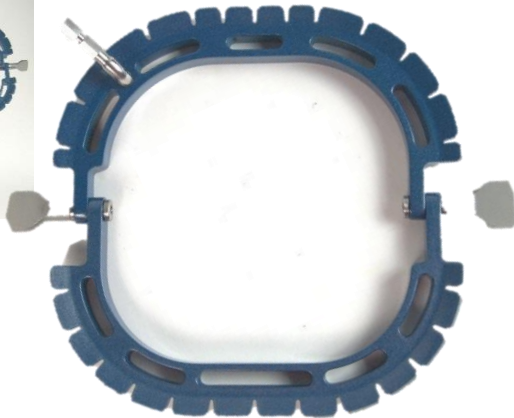
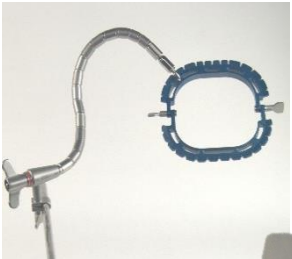


# DynaTrac™ Retractor Frame & Stays

DYNAMIC, VERSATILE & STABLE RETRACTION

## DynaTrac Retractor Frames

COMING SOON



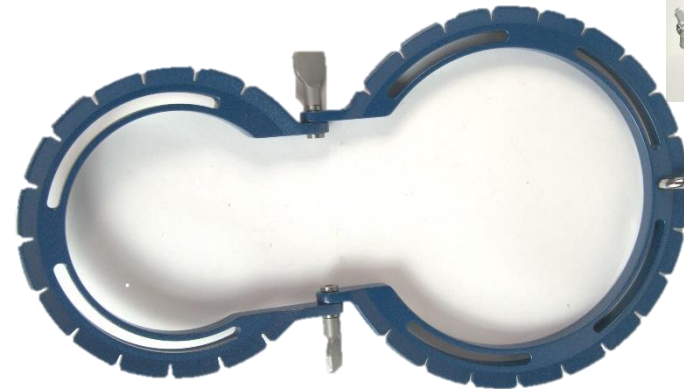
### DynaTrac™ Retractor Frame – Square

Ref. No. 78001-HP, with Hex Post  
7.4" (18.8cm) x 7.4" (18.8cm)

#### Key Applications

##### *Colorectal*

- Anal Fistula Repair
- Retrovaginal Fistula Repair
- Perineal Proctectomy (Rectal Prolapse Repair)
- Low Anterior Resection (LAR) / Colo-anal Anastomosis
- Sphincteroplasty
- Hirschsprung's Procedures
- Total proctocolectomy ileal pouch anal anastomosis / mucosectomy



### DynaTrac™ Retractor Frame – Figure 8

Ref. No. 78002-HP, with Hex Post  
15.3" (38.9cm) x 8.9" (22.6cm)

#### Key Applications

##### *Head & Neck*

- Tracheostomy
- Lymph Node Biopsy
- Thyroidectomy and Parathyroidectomy

##### *URO-GYNE*

- Anterior and Posterior repairs (with and without Mesh)
- Mid-Urethral Slings
- Thyroidectomy and Parathyroidectomy

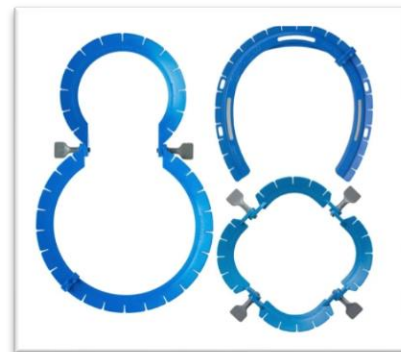
# DynaTrac™ Retractor Frame & Stays

DYNAMIC, VERSATILE & STABLE RETRACTION

## COMPETITOR OVERVIEW

**Cooper Surgical** offers **Lone Star** Disposable Kits which are...

- Expensive
- Requires stock management
- Only used for superficial retraction, with elastic Stays
- Does not permit table mounted retraction
- Horseshoe shape not available in reusable, only disposable
- Stays are more expensive compared to Mediflex's
- Rake/Hooks are disposable, Mediflex offers reusable
- Frame requires suturing or clamping for fixation and stability



**Mediflex**<sup>®</sup>  
SURGICAL PRODUCTS

# DynaTrac™ Retractor Frame & Stays

DYNAMIC, VERSATILE & STABLE RETRACTION

## COMPETITOR OVERVIEW

	Mediflex® DynaTrac™ System	Cooper Surgical Lone Star™	LiNA™ SeaStar™
Reusable Horseshoe Frame	✓	✗	✗
Self-Retaining Retractor Frame	✓	✓	✓
Does not require suturing to patient for security	✓	✗	✗
Surgical Stays for superficial retraction	✓	✓	✓
Surgical retractor blades for deep retraction	✓	✗	✗
Table-mount connection	✓	✗	✗
Table mounted holding & positioning systems	✓	✗	✗

# DynaTrac™ Retractor Frame & Stays

DYNAMIC, VERSATILE & STABLE RETRACTION

## COMPETITOR CROSS REFERENCE

	Cooper Surgical Lone Star™	Mediflex® DynaTrac™ System
5mm Sharp Hook	3311	4005S
5mm Blunt Hook	3316	4005B
12mm Blunt Hook	3350	4012B
2 Prong Rake Hooks- Blunt	3332 (Disposable)	72256 (Reusable)
3 Prong Rake Hooks- Blunt	3335 (Disposable)	72252 (Reusable)
4 Prong Rake Hooks- Blunt	3334 (Disposable)	72257 (Reusable)
4 Prong Rake Hooks- Deep, Sharp	NOT AVAILABLE	72150-S (Reusable)
4 Prong Rake Hooks- Deep, Blunt	NOT AVAILABLE	72150 (Reusable)

# FlexArm™ Plus | Holding Benefits

## DYNAMIC, VERSATILE & STABLE RETRACTION

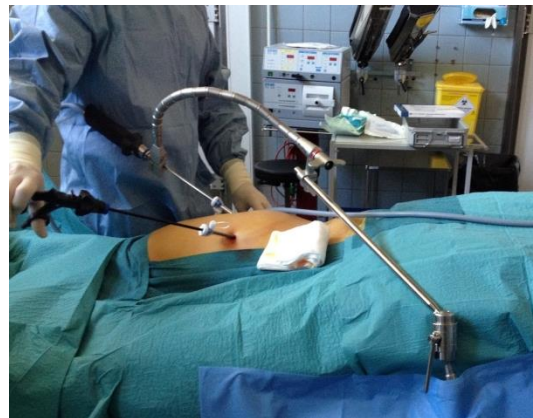
1. Can be used to free-up OR personnel for more important tasks – saves time and labor
2. Gives surgeons precise control over the position of cameras, retractors etc.
3. Eliminates movement and fatigue of 'human holders'
4. Reduction in organ trauma associated with hand held (human) retraction



**FlexArm™ Plus**  
**Long Reach System**  
Ref. No. 99054-QCLR



**Quick-Grip**  
**Automatic Holding Tips**  
5mm Ref. No. 72163  
10mm Ref. No. 72162



**Mediflex®**  
SURGICAL PRODUCTS



**Mediflex<sup>®</sup>**  
***SURGICAL PRODUCTS***